



Mine Safety Appliances Company • P.O. Box 426 • Pittsburgh, PA 15230

Telephone: (412) 967-3000

Writers Direct Dial No.

Inspection Advisory **Ultra Elite® Facepiece**

June 21, 2004

To: Users of Respirators with an Ultra Elite Facepiece:

MSA has received reports of damage to the inlet and speaking diaphragm housing (component housing) on Ultra Elite Facepieces. The damage is not visible without some disassembly and the leakage that the damage can cause may not be detected when conducting a facepiece fit check. Our evaluation indicates that this condition applies to a limited number of facepieces. MSA recommends that users perform a one-time inspection of affected facepieces as described in the attached procedure to determine if the component housing needs to be replaced.

This one-time inspection applies only to Ultra Elite Facepieces manufactured from July through December 2003.

The component housing is located within the plastic assembly that contains the facepiece inlet, speaking diaphragm, as well as the inhalation and exhalation valves. The date of manufacture may be determined by checking the molded emblem on the inside surface of the facepiece. See the attached inspection procedure for additional information on checking the date code and conducting the inspection. Please note that this damage can occur under normal use conditions without excessively tightening a respirator component to the facepiece inlet.

If after completing the inspection, you determine that the component housing requires replacement, do not use the facepiece. Please contact MSA Customer Service at 1-877-MSA-3473 to make arrangements to return the facepiece to MSA for repair free of charge.

If you have any questions, contact MSA Customer Service at 1-877-MSA-3473.

Very truly yours,

Charles J. Seibel, Jr.
Manager of Product Safety

PPL04020-01

LOCATION: RIDC Industrial Park • 121 Gamma Drive • Pittsburgh, PA 15238

UltraElite® Facepiece Component Housing Inspection

Note: UltraElite Facepieces can be identified by a molded emblem in the forehead area containing the word “UltraElite”.

See User’s Instructions for additional illustrations and information.

Inspect the component housing on UltraElite Facepieces manufactured from July to December 2003 using the procedure below.

To locate the date code:

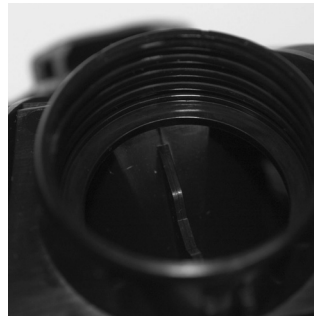
1. Hold the UltraElite Facepiece in one hand.
2. Gently pull the chin cup toward you.
3. Under a good light source, locate the stamped circle on the inside, right side of the facepiece.
4. If a dot is visible in either the third or fourth quadrant of the “03” section and none in the “04” section, the facepiece is subject to the Inspection Advisory. Proceed with the inspection as follows:

Inspection Procedure: (see illustration)

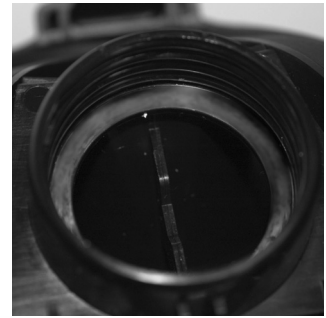
1. For Air Purifying and Pressure Demand facepieces (except MMR and Firehawk), unthread and remove the adapter assembly. Component housing cover removal is not necessary.
2. For MMR and Firehawk™ slide-to-connect facepieces:
 - a. Remove the two component housing cover screws and the neckstrap.
 - b. Remove the locking ring (MMR only).
 - c. Lift up on the cover release hook, located forward of the adapter assembly opening. With the release lifted, the cover can be removed by pulling it away from the housing. On MMR facepieces, tilt the cover and work it over one adapter bayonet at a time.
 - d. Unthread and remove the adapter.
3. For Firehawk push-to-connect (PTC) facepieces:
 - a. Remove the two component housing screws and the neckstrap.
 - b. Lift up on the cover release hook, located forward of the adapter assembly opening. With the release lifted, pull the cover away from the component housing so that it is between the hex flats and flange of the PTC adapter.
 - c. With the cover against the adapter flange, unthread the adapter from the component housing.
4. Pull the gasket (valve spider) out. Ensure that the white inlet disc valve remains attached to the gasket.
5. Inspect the flat sealing surface for dullness or discoloration. Refer to the photos below. Also, for reference, compare the thread finish to the sealing surface.

Note: For clearer photos, refer to this inspection advisory on MSA’s website:

<http://www.msanet.com/msanorthamerica/msaunited-states/USnoticeindex.html>



Normal



Discolored

6. If dullness, discoloration, cracks, or breaks are noted, do not use the facepiece. Call MSA Customer Service at 1-877-MSA-3473 to make arrangements to return the UltraElite Facepiece to MSA for repair.
7. If no discoloration, cracks, or breaks are noted, reassemble the facepiece as indicated below and return it to service.

Reassembly of Ultra Elite Component Housing Cover and Adapter

1. Gently stretch the hole in the center of the inlet disc valve over and onto the gasket stem.
 2. With the pull-tab facing outward, insert the gasket into the facepiece at an angle so that the groove around the outer edge captures the housing rim. The lower lip on the gasket must be completely under the rim in the component housing.
- Note:** The gasket may need to be bent slightly to work the lip under the rim all the way around. When installed correctly, the gasket will lay flat in the housing and none of the spokes will be bent.
3. For Air Purifying and Pressure Demand facepieces (except MMR and Firehawk), reinstall the adapter assembly.
 4. For MMR facepieces:
 - a. Holding the adapter assembly in one hand, rotate the slip nut so that the octagon flange on the slip nut lines up with the octagon flange on the adapter.
 - b. Thread the adapter assembly into the facepiece.
 - c. Using a torque wrench with the spanner wrench (PN 494261), torque the adapter to a minimum 12 inlbs. If necessary, continue to torque until the top flat on the octagon is horizontal with a maximum torque of 27 inlbs.
 - d. The bayonets must be in a horizontal orientation. If the bayonets are not horizontal, remove the adapter assembly and turn the slip nut to the next octagon flange alignment.
 - e. Re-install the adapter assembly so that the bayonets are horizontal when the adapter assembly is torqued 12 - 27 in-lbs.
 - f. Place the component housing cover over the adapter assembly. Tilt and rotate the cover to work it over one bayonet at a time.

- g. Insert the tab on the cover into the slot in the lens ring.
 - h. Press in on the front of the cover until the cover hook snaps in place.
 - i. Install the locking ring by sliding it into the groove on the adapter. (Do not slide it into the space between the slip nut flange and the adapter flange.)
 - j. Place the neckstrap brackets and the spacers in the cover sockets under the locking ring.
 - k. Install the Phillips screws and tighten.
 - l. Verify each of the following features.
 - i. The adapter bayonets are locked into a horizontal position and CANNOT be rotated.
 - ii. The slip nut is threaded completely into the face piece and locked securely. It CANNOT be rotated.
 - iii. The metal locking ring is locked into position and CANNOT be rotated.
 - iv. There is no loose play in the assembly of parts.
4. For Firehawk slide-to-connect facepieces.
- a. Thread the adapter into the facepiece.
 - b. Tighten the adapter hand tight. Use the component housing cover to continue to tighten until the top flat on the octagon is horizontal.
 - c. Insert the tab on the component housing cover into the slot in the lens ring.
 - d. Press in on the front of the cover until the cover hook snaps in place.
 - e. Place the neckstrap brackets in the cover sockets.

- f. Install and tighten the Phillips screws.
 - g. Verify that there is no loose play in the assembly of parts.
5. For Firehawk push-to-connect (PTC) facepieces:
- a. Insert the component housing cover tab into the lens ring slot, leave the cover loose.
 - b. Place the PTC adapter through the facepiece component housing cover and thread the adapter assembly into the facepiece hand tight.
 - c. Continue to tighten until the top flat of the adapter octagon is horizontal.

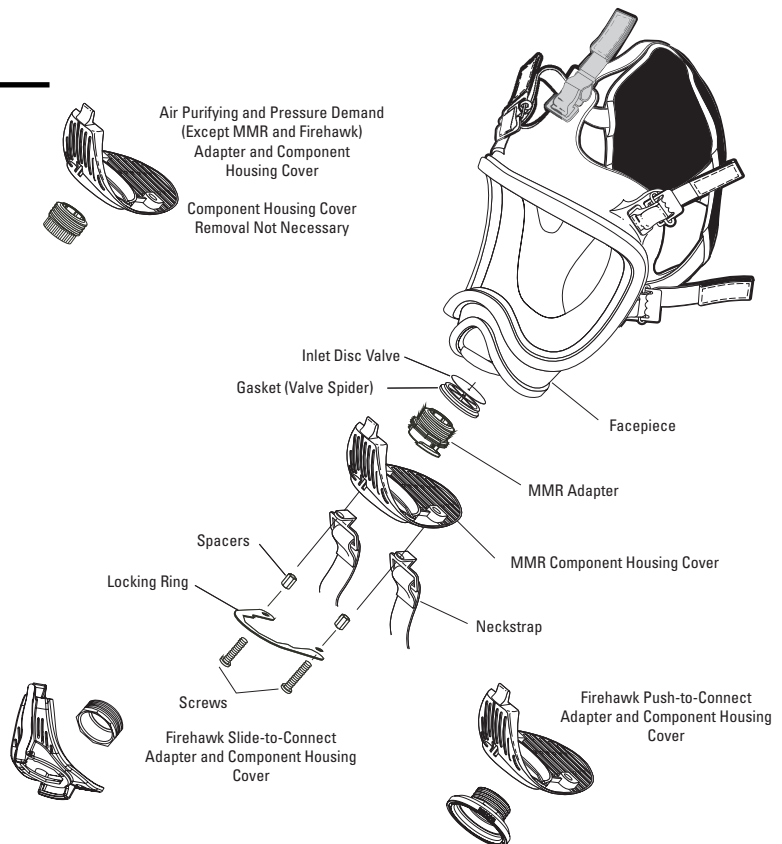
Note: The octagon flats on the facepiece adapter must align with octagon flats of component housing.

- d. Press in on the front of the cover until the cover hook snaps into place.
 - e. Place the neckstrap brackets into the cover sockets.
 - f. Install the Phillips screws and tighten.
 - g. Verify that there is no loose play in the assembly of parts.
6. Don the facepiece and check the face-to-facepiece seal. Follow the facepiece fit check procedures in the user's instructions.

Note: For questions regarding this procedure, please contact MSA Customer Service at 1-877-MSA-3473.

Ultra Elite®

Facepiece Components



For More Information: Call (1-800-MSA-2222) or Visit Our Website at (www.MSAnet.com)



Be Sure.
Choose MSA.

MINE SAFETY APPLIANCES COMPANY
PITTSBURGH, PENNSYLVANIA, U.S.A. 15230